



## Universal Orbital shaker OS-20

compact, low-profile, orbital laboratory shaker for versatile applications in the fields of biotechnology, microbiology and medical diagnostics. The OS-20 provides gentle rotational mixing and precise circulation at each point of the platform. Variable digitally displayed speed control from 50-250 rpm. Digital timer for setting a time interval and continuous operation.



OS-20 with PP-4 platform

### Specification

Kind of motion	: orbital
Orbit size	: 20 mm
Speed regulation	: 50 - 250 rpm
speed display	: digital (LED)
Timer	: from 1 min to 24 hours / continuous
Time display	: digital (LED)
Max load	: 2,5 kg excl. attachment
Power	: 12V. 800 mA (External power adapter)
Overall size	
(w/o attachment)	: 220 x 190 x 70 mm
weight	: 3,9 kg.



## Universal Orbital shaker OS-10

compact, powerful and quite microprocessor controlled orbital laboratory shaker for many general purpose shaking application. Speed and time setting are easy and during operation the LCD status display clearly indicates both set and actual speed, plus set and elapsed time.



OS-10 with UP-12 platform

### Specification

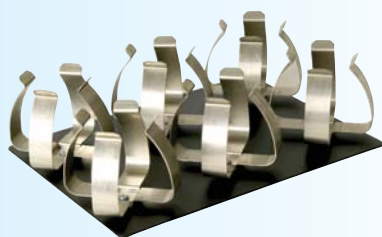
Kind of motion	: orbital
Orbit size	: 20 mm
Speed regulation	: 50 - 350 rpm
speed display	: digital (LED)
Timer	: from 1 min to 96 hours / continuous
Time display	: digital (LED)
Max load	: 3 kg excl. attachment
Power	: 12V. 800 mA (External power adapter)
Overall size	
(w/o attachment)	: 270 x 260 x 85 mm
weight	: 3 kg.

### Code Description

BOE 8059000	Universal Orbital Shaker OS-20, AC Adapter 220V
BOE 8059100	Universal Orbital Shaker OS-20, AC Adapter 110V
BOE 8069000	Universal Orbital Shaker OS-10, AC Adapter 220V
BOE 8069100	Universal Orbital Shaker OS-10, AC Adapter 110V

### Accessories for OS-20 and OS-10

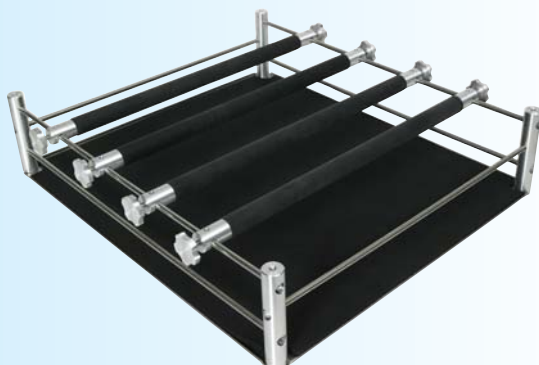
BOE 8059001	Dish platform PP-4 with rubber mat for petri dishes, culture flasks etc.
BOE 8059002	Universal platform UP-12 for all kind of flasks 260 x 180 mm, stainless steel with variable clamping rolls and rubber mat. Numbers of flasks at the platform 100- 150 ml flasks max 12-9 pieces 200- 250 ml flasks max 6-4 pieces 500-1000 ml flasks max 4-2 pieces
BOE 8059003	Platform P-6/250 with fixed clamps for 6 flasks 250/300 ml.



Platform P-6/250

**BOECO**  
Germany**Programmable Orbital Shaker  
Multi PSU-20**

PSU-20 with tray platform



Platform UP-400



The Multi PSU 20 is a powerful and extremely quite shaker with 3 types of motion, which can be used separately but also in a consecutive realisation of different motion types in a cyclical principle. The Multi PSU-20 has a microprocessor control which allows real-time programm correction, indication of set and actual speed, angle and time, operation timer in the display.

**1) Orbital motion**

simple even circular motion - common type of motion used in shakers. Adjustable speed from 30 to 250 rpm.

**2) Reciprocal motion**

vertical rotation with changing direction of rotation. Adjustable turning angle (from 15° to 360°, increment 30°) sets the limits for this type of motion. The speed is the same as set for rotational motion (from 30 to 250 rpm).

**3) Vortex motion of the platform (vibration)**

intensive mixing of samples at high speed with small amplitude - Vortex motion.. Adjustable turning angle of 0° to 5° (increment 1°)

**Specification**

Kind of motion	: orbital
Orbit size	: 20 mm
Speed regulation	: 30 - 250 rpm
speed display	: digital (LED)
Timer	: from 1 min to 24 hours / continuous
Time display	: digital (LED)
Max load	: 15 kg
Power	: 12V. 800 mA (External power adapter)
Overall size (w/o attachment)	: 485 x 520 x 140 mm
weight	: 18,35 kg.

Code	Description
BOE 8080000	Programmable Orbital Shaker PSU-20, AC Adapter 220V
BOE 8080100	Programmable Orbital Shaker PSU-20, AC Adapter 110V

**Accessories**

BOE 8080010	Universal platform UP-400 for all kind of flasks 400 x 400 mm, stainless steel with 4 variable clamping rolls and rubber mat.		
BOE 8080005	tray, platform made out of Aluminium, 360 x 360 mm with holes to accommodate clamps for Erlenmeyer flasks, separating funnels and test tube racks		
BOE 8081001	Spring clamp, 25 ml	max.:	36 pcs.
BOE 8081002	Spring clamp, 50 ml	max.:	36 pcs.
BOE 8081003	Spring clamp, 100 ml	max.:	25 pcs.
BOE 8081004	Spring clamp, 250 ml	max.:	16 pcs.
BOE 8081005	Spring clamp, 500 ml	max.:	9 pcs.
BOE 8081006	Spring clamp, 1000 ml	max.:	9 pcs.
BOE 8081007	Spring clamp, 2000 ml	max.:	4 pcs.
BOE 8081009	Holding device for Separating funnels 250-1000 ml		